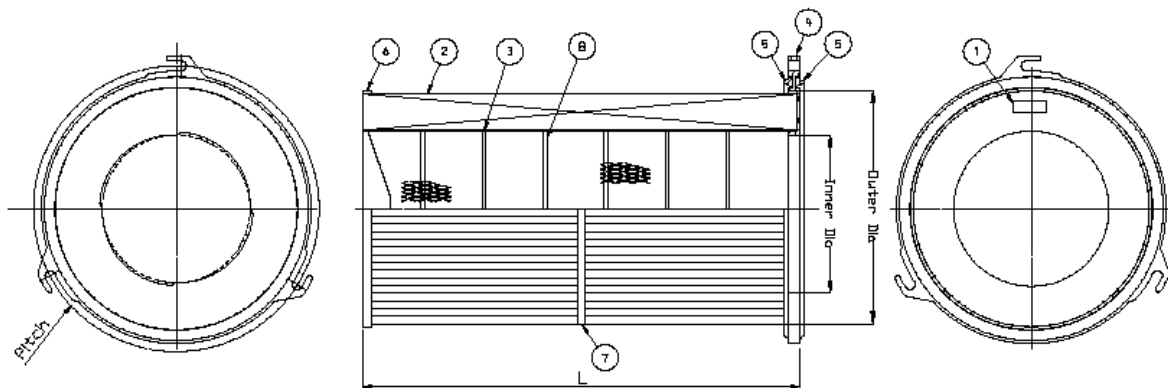


Replacement Elements Cartridges

Series 324



Quick Fix 3 top flange
Closed bottom

SPECIFICATIONS

Number	Description
1	Marking
2	Media pack
3	Inner liner
4	Top end cap - quick fix
5	Gasket (top and bottom)
6	Bottom end-cap closed
7	Outer strap
8	Inner beading

Symbol	Dimension
L	600 - 660 - 1000 - 1200 mm
Inner DIA	213 mm
Outer DIA	324 mm
Pitch	392 mm

Available media qualities:

- Ultra-Web® SB
 - Ultra-Web® SB Anti-Static
 - BonDura™
 - BonDura™ Anti-Static
 - Torit-Tex™ *
 - Torit-Tex™ Anti-Static*
- * not available in length 660mm